

The Hellbender

From the film *The Last Dragons: Protecting Appalachia's Hellbenders*

Produced by



PROMOTING AQUATIC AWARENESS | WEMAYFLY.ORG

DC Sponsor



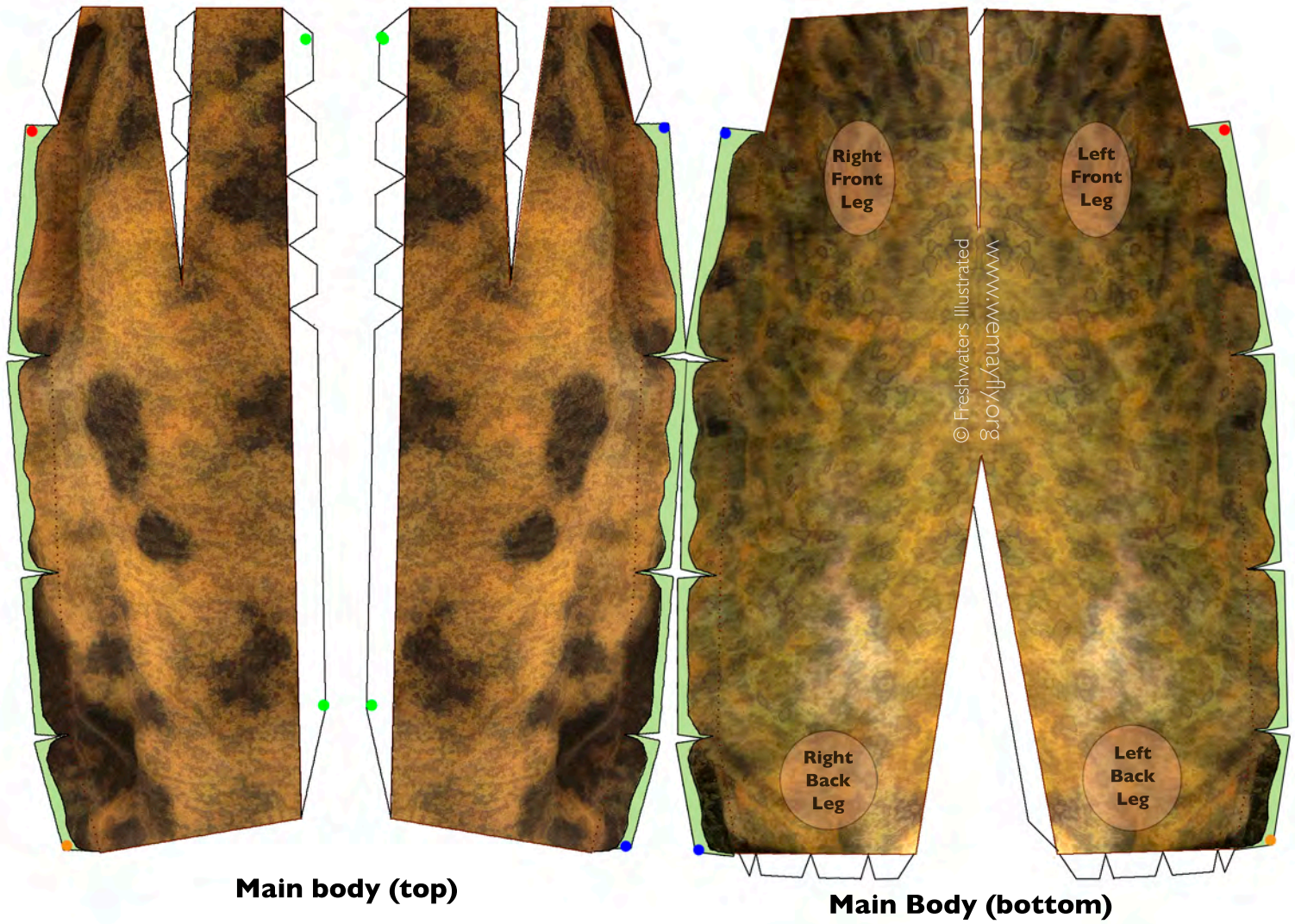
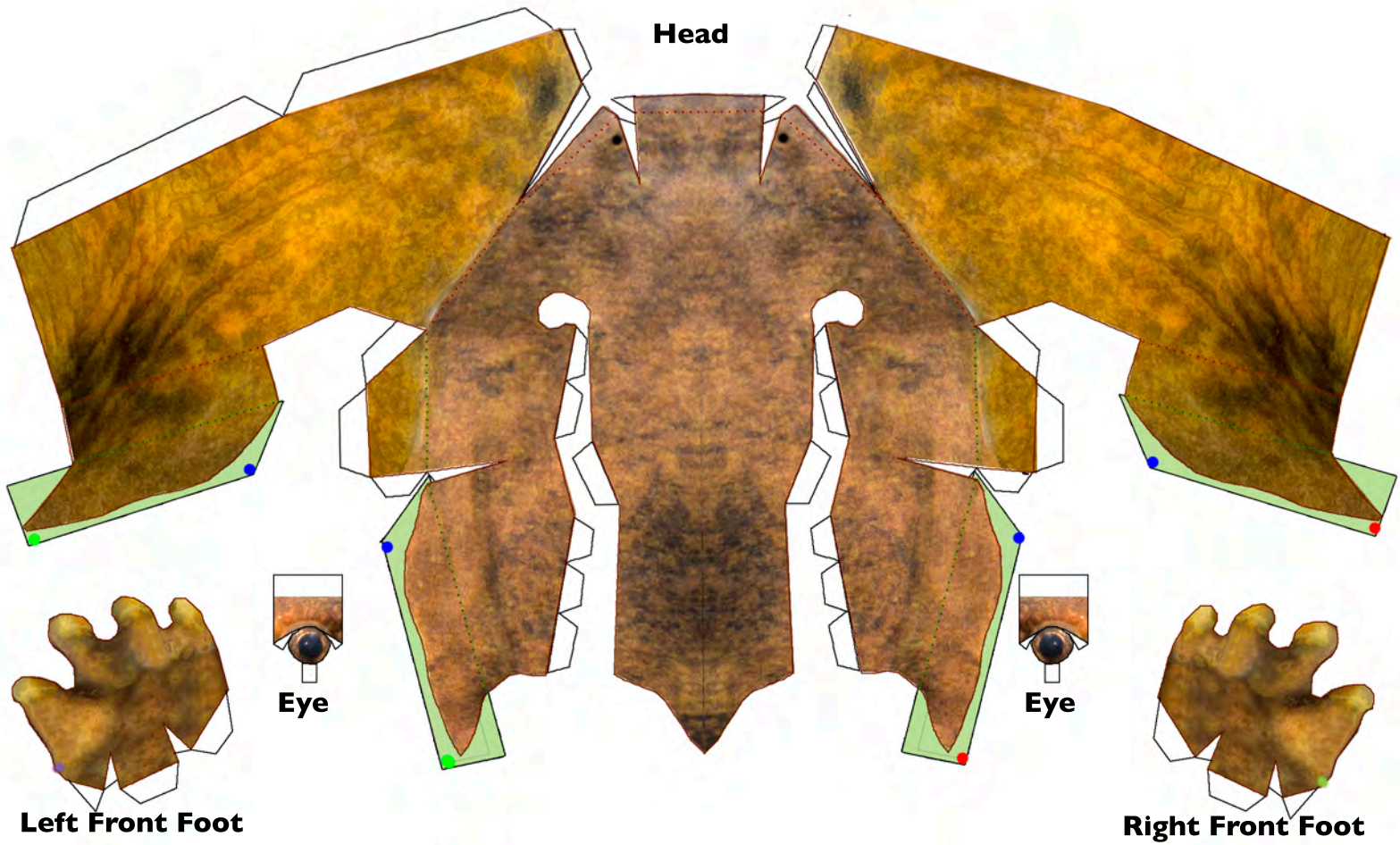
Papercraft design by Matt Sloat
Photo by Dave Herasimtschuk
© Freshwaters Illustrated

Produced with cooperation from
US Forest Service - Nature Watch
Tennessee Wildlife Resources Agency
North Carolina Wildlife Resources

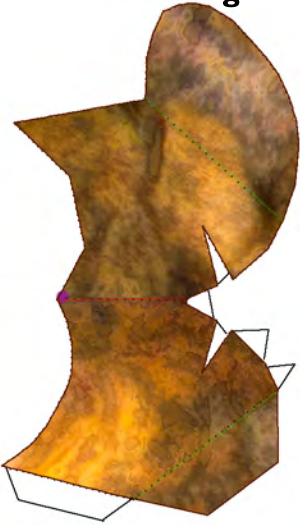
Fold along blue lines and glue/staple top for a stand-up photo display to go with your model

Instructions

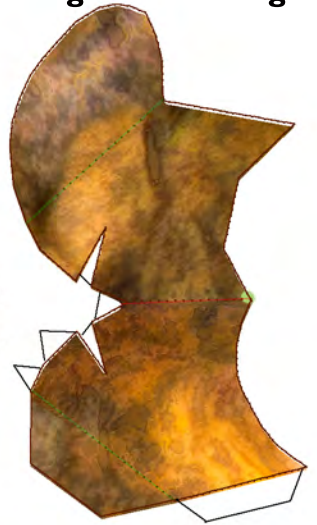
1. **Watch 'The Last Dragons' (viewable at: vimeo.com/wemayfly/thelastdragons)**
2. You'll need: good scissors, white glue, a toothpick, and patience!
3. Cut sections out along lines, (green areas will be trimmed after gluing).
4. Assemble head, body, body bend, and legs separately using glue, **peak folds** [^], **valley folds** [v], and matching up colored dots (a toothpick helps to apply glue lightly and evenly).
5. Assemble parts in this order: head (with eyes), body, body bend, tail, legs.
6. Eyes are assembled into half-cylinders, and tabs are glued to inside of head.
7. Green areas are sandwiched, glued together completely, and green is later trimmed away, so that sides of head/body become flattened skin folds and tail is also flat.
8. **Place in a prominent spot - and remember the 'bender'!**
9. **Be careful not to disturb river rocks when you're in hellbender country!**
- 10 **Be an ambassador for hellbenders and their habitat!**
11. Send feedback and questions (on film or paper model) to: info@wemayfly.org



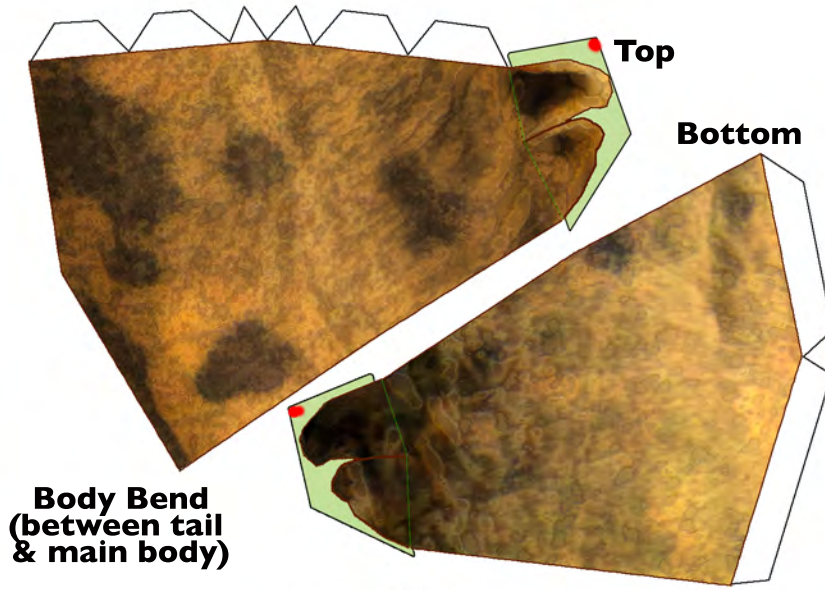
Left Front Leg



Right Front Leg



**Body Bend
(between tail
& main body)**



(Top)

**Tail
(Bottom)**

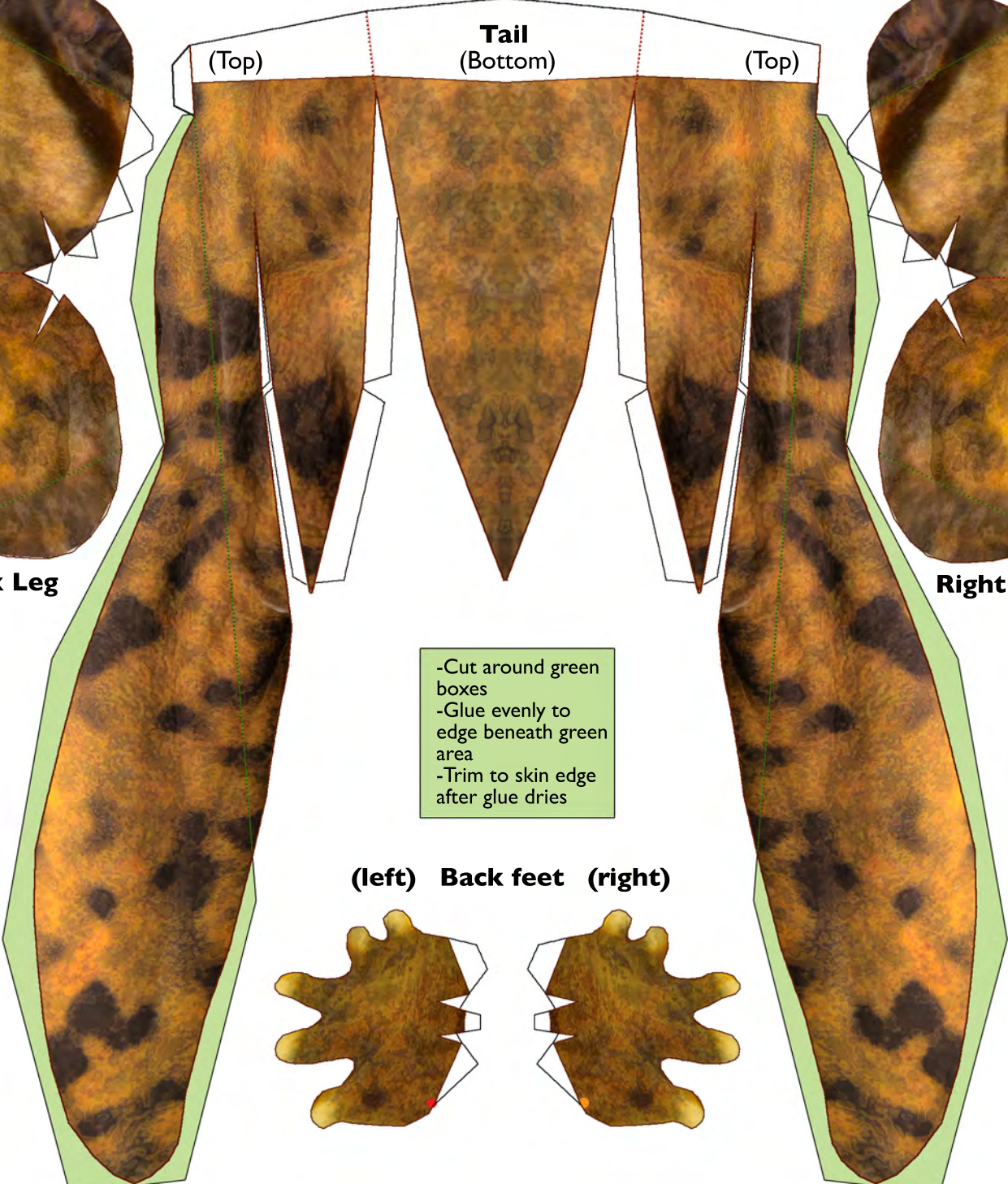
(Top)



Left Back Leg



Right Back Leg



-Cut around green boxes
-Glue evenly to edge beneath green area
-Trim to skin edge after glue dries

(left) Back feet (right)

